



Muratec MFX-2850

BUYERS LABORATORY INC. Lab Test Report

A Comprehensive BLI Laboratory Evaluation

Muratec MFX-2850

28 PPM Copier ■ Printer ■ Scanner ■ Fax



Test duration: Two months, including a 50,000-impression durability test.



Reliability	Excellent
Multitasking	Very Good
Administrative Utilities	Fair
Feedback to Workstations	Poor
Ease of Network Setup	Good
Print Drivers	Good
Applications Compatibility	Excellent
Scan Functions	Good
Image Quality	Very Good
Productivity	Good
Ease of Use	Very Good
Feature Set	Good
Toner Yield	Good
Cost per Page	*
Value	Very Good

* Cost per page could not be calculated as pricing is set by dealers and was not provided by Muratec.

Maximum monthly duty cycle: 50,000 impressions.

BLI's recommended monthly duty cycle for peak usage: Up to 40,000 impressions.

BLI RECOMMENDATION

ALSO INSIDE

- ▶ Test Procedures
- ▶ Specifications
- ▶ Certificate of Reliability

Ratings scale:
Excellent, Very
Good, Good, Fair
and Poor.

The Muratec MFX-2850 gave a very good overall performance in its comprehensive two-month lab evaluation. The 28-ppm monochrome unit, which features standard copy, print, scan and fax functionality, offers excellent reliability and received good to very good marks in the majority of performance categories tested. Additionally, the unit produced very good print and copy quality, with no toner overspray. Ease of use is also very good, thanks to its highly intuitive and well organized control panel and voice guidance assistance. Making the MFX-2850 even more attractive is a price that's lower than the average for comparably equipped models in its speed range. BLI recommends the MFX-2850 for offices with monthly volumes of up to 40,000 impressions.



PERFORMANCE OVERVIEW

+, – and ○ represent positive, negative and neutral attributes, respectively.

RELIABILITY

EXCELLENT

- + The Muratec MFX-2850 completed BLI's two-month, 50,000-impression durability test without requiring service of any kind. Moreover, only two misfeeds occurred during the test, for a misfeed rate of just one per 25,000 impressions.
- The unit's preventive maintenance schedule (PM), at 80,000 impressions, is below the average of units tested to date.

MULTITASKING

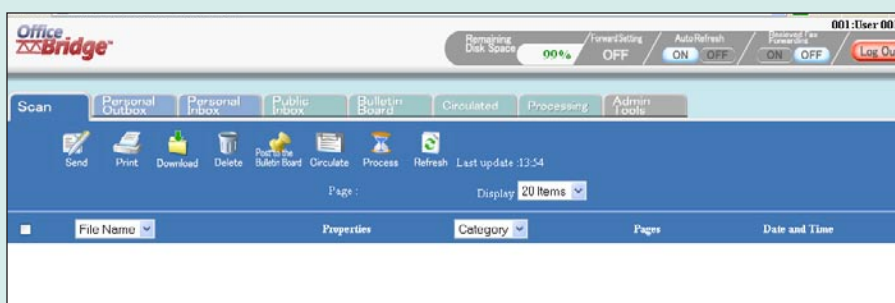
VERY GOOD

- + Offering very good multitasking capabilities, the MFX-2850 enables users to program multiple copy jobs while another copy job or a print job is in progress, with no slowdown observed between jobs. The number of copy jobs that can be programmed is limited only by memory capacity which was tested using BLI's 10-page test document. In testing, nine jobs (using BLI's 10-page original) could be programmed ahead during another copy job. Additionally, an unlimited number of print jobs can be sent.
- Programming the next copy job can begin as soon as the pages of the previous copy job have been scanned.
- + A prompt appears on the display letting users know the system is ready to scan the next copy job.
- After the reserve job is loaded in the device, users must press the Start key. A prompt then appears asking the user to reserve the copy job. Upon pressing the Yes touch key, the document is scanned and will start as soon as the current job is finished.
- The Interrupt key is a hard key and is available during copy and print jobs. A copy job can interrupt another copy or print job and can use all available features such as duplexing, stapling and the document feeder.
- Once the interrupt job is complete, users may press the "Scanning End" key to resume the interrupted job; otherwise the unit returns to the interrupted copy job without user intervention in 2 minutes and 43 seconds.
- Jobs are processed on a first-in, first-out basis; one function cannot be established as a priority function.

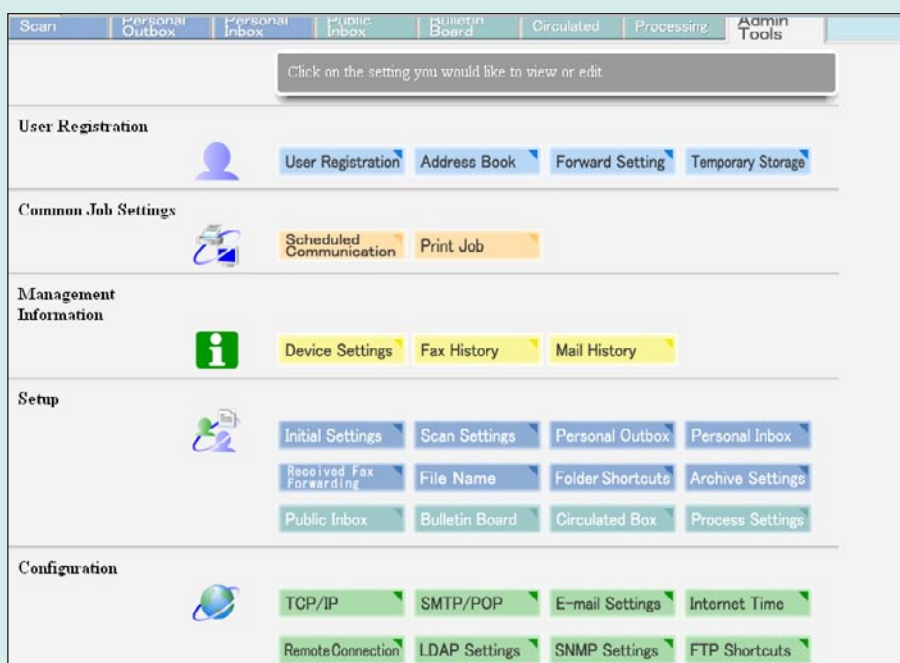
ADMINISTRATIVE UTILITIES

FAIR

- The MFX-2850's standard administrative utilities consist of the OfficeBridge suite, which allows users to import and manage image data created by the MFP.
- The OfficeBridge utility—which must be installed on each user's workstation—offers access to device settings, the address book and scheduled fax jobs.
- The utility does not provide job status of print functions.
- OfficeBridge suite (OB) contains seven utilities for device management: OB Pro InfoMonitor notifies users when a new document has arrived in the scan box and when an outbound transmission has been completed; OB Pro Document Download Manager automatically downloads received documents to a specified destination or file format for individual users; OB Pro Backup Utility searches for documents in the OfficeBridge Inbox, Outbox, Bulletin Board, Circulation and Processing workflow and backs them up as TIFF images in a network location designated by the OfficeBridge Administrator; CoverPage Editor enables users to create and edit cover pages to attach to fax transmissions and automatically inserts address book information; OB Pro Address Book Import Utility enables inputting of the data from a user's PC into the MFP's address book; OB Pro TWAIN Connector reads scanned images into the image editing application software; OB Pro Scan to Print Monitor allows users to create color copies using the MFX-2850 and a network-connected color laser printer. The user registers up to five color printers into the Scan to Print Monitor utility. Users then walk up to the MFP, select printer from the Scan mode, insert their document and select the printer they wish to scan to. The document is then scanned as a TIFF file and routed by Scan to Print Monitor to the appropriate printer.



OfficeBridge Utility



OfficeBridge Admin Tools Tab

- + Administrators can remotely enter names and destinations in the address book via the OfficeBridge utility. OfficeBridge also allows administrators to change the sound settings of the MFP to either voice guidance or an audible alert when jobs are complete.
- All OfficeBridge users can access each setting within the utility if an administrator has not been registered. Once an Administrator has been registered, features such as system settings, file names and the address book cannot be altered by end users.

FEEDBACK TO WORKSTATIONS

POOR

- The feedback provided by the MFX-2850 is very limited compared to that of other units tested. There are no pop-up messages or error alerts to notify users of warning conditions and the unit does not have an embedded Web utility that indicates device status.
- + According to Muratec, the InfoMonitor utility will alert users via pop-up messages of failed fax jobs.

EASE OF NETWORK SETUP

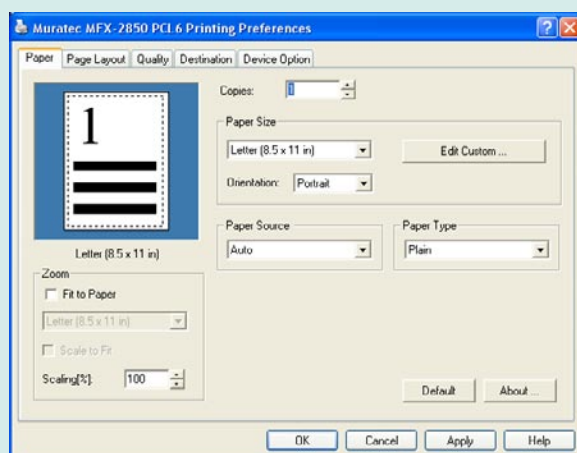
GOOD

- Installing the unit's standard Windows GDI driver requires eight clicks of the mouse. The OfficeBridge utility requires a separate installation.
- + The CDs for both the print driver and OfficeBridge auto launch upon insertion into the disk-drive. Each CD contains user and setup manuals. Also, once the OfficeBridge CD is launched, it directs the user to the OfficeBridge Web page for We-based navigation of manuals and setup instructions.
- The unit offers a standard 10/100BaseT Ethernet network interface.
- Since the port for network connectivity is not automatically created during installation of the driver, the user must do so manually by searching for the controller on the network and adding it to the system, using the "Add Port" wizard.

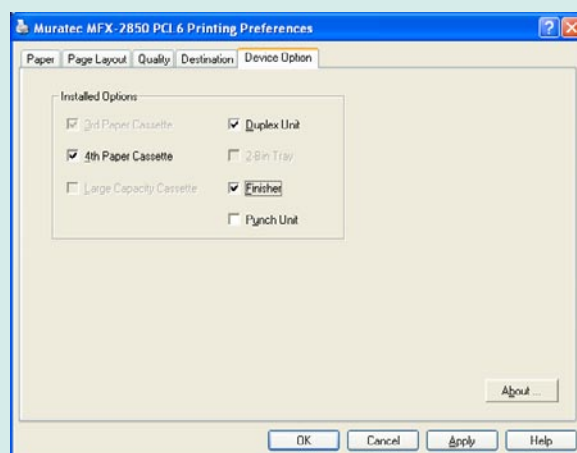
PRINT DRIVERS

GOOD

- The MFX-2850, which is based on a 160-MHz print controller, comes with a standard Windows GDI print driver, with support for optional PCL 5e/6 page description languages.
- The feature set of the print drivers is limited, as features such as proof print and overlay are not available. Not all of the features used for typical print jobs are accessible on the main screen; Finishing and Duplexing can be found on the Device Option tab, for example.
- + Watermarks are available via the Page Layout tab and can be customized to user specification.



MFX-2850 Print Driver Paper Tab



MFX-2850 Print Driver Device Option Tab



- The driver does not offer a point-and-click interface or offer any consumables feedback. However, a toner-saver mode is available to reduce toner waste.
- Graphical changes in the driver reflect that settings such as duplex and staple are enabled.
- + The unit offers simultaneous RIP and print, with printing beginning while pages are still being processed. There is also no pause between jobs.
- + File size remained the same when printing multiple sets, regardless of whether “collate” was selected from the properties screen of the driver or from the print screen within an application.
- + In addition to the standard Windows GDI controller tested, this unit offers an optional 600-MHz PCL print controller with a 512-MB print memory capacity.

APPLICATIONS COMPATIBILITY

EXCELLENT

- + No problems were experienced with any of the test files used in the applications compatibility tests. Units are tested for compatibility on Windows XP platforms with Microsoft Word 2000, Microsoft PowerPoint 2000, Microsoft Excel 2000, Adobe PageMaker 7.0, Adobe Photoshop 6.0 and Adobe Acrobat 6.0 using 25 application test files, which contain text, graphics, halftone images, tables, etc., enabling BLI technicians to evaluate memory usage, file processing, font rendering and grayscale capability.

SCAN FUNCTIONS

GOOD

- + The unit supports both color and black-and-white scanning, and automatically switches between black and color, depending on the original.
- Scanning a document in PDF to one e-mail destination using LDAP support at 200 dpi requires seven keystrokes.
- + Additional scan destinations include scan to e-mail, folder, FTP and hard-disk drive using PDF, TIFF and JPEG file formats. Fax and Internet fax are also standard.
- + Up to 25 “shortcuts” can be programmed for frequently used scan-to-FTP destinations. Users can send scanned documents to frequently used network destinations in three keystrokes.



- The unit offers a small QWERTY touch screen keypad to enter e-mail addresses. In addition, if the user makes a mistake when entering a destination, he or she must use the arrow key to get to the letter, press “delete” and repeat the process for every character to be deleted.
- + In addition to sending for LDAP destinations via the control panel, LDAP sending can be conducted from the Web utility to facilitate the programming of scan destinations. LDAP supports up to five servers.
- The unit allows users to search with LDAP using e-mail addresses or the contacts first or last name.
- + Scan to Print Monitor allows users to create color copies using the MFX-2850 and a network-connected color laser printer. The user registers up to five color printers into the Scan to Print Monitor utility. Users then walk up to the MFP, select printer from the Scan mode, insert their document and select the printer they wish to scan to. The document is then scanned as a TIFF file and routed by Scan to Print Monitor to the appropriate printer. This utility also provides color scanning adjustments for hue, saturation and contrast.
- + When the OfficeBridge software is installed on each user’s workstation, documents can be stored in user boxes (memory storage) on the device and users can access their scan box via the browser interface.
- + The unit’s tested scan speed, at 300 x 300 dpi, is 40.4 images per minute for single-sided originals and 36.9 images per minute for double-sided originals.
- BLI technicians noted that when a test page was sent to a non-existent destination, the device responded with a “transaction complete” message. No error page was generated.

IMAGE QUALITY

VERY GOOD

- + Print output produced by the MFX-2850 is very good overall, receiving very good ratings for text, line art, solids and halftone range.
- Halftone pattern was good in print mode, although output was somewhat grainy and minimal banding was evident.
- + Copy quality produced by the MFX-2850 was also very good overall. Line art, solids and halftones were all very good. Text was rated good, exhibiting fully formed characters, above average darkness and average sharpness and smoothness of curves/serifs/lines.
- + In both print and copy modes, BLI test technicians cited consistent line thickness and no toner overspray. In addition, closely spaced fine lines remained distinct.



PRODUCTIVITY

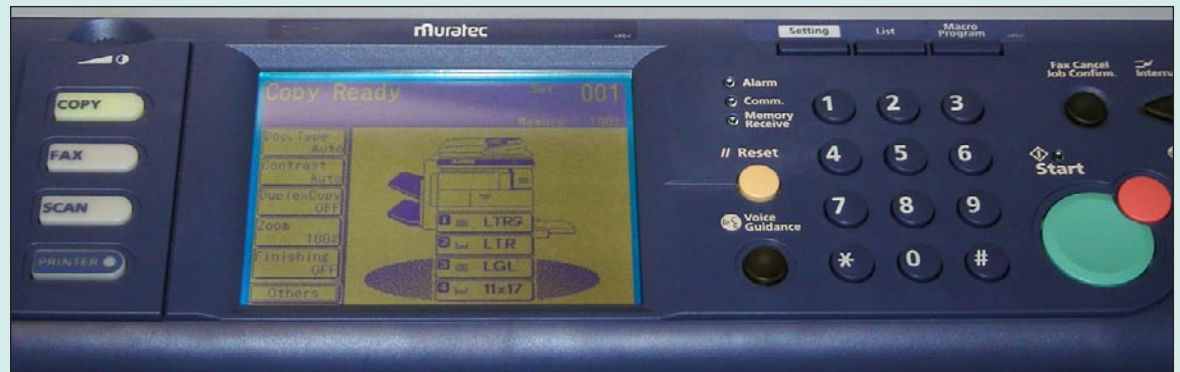
GOOD

- The MFX-2850's efficiency rate when printing BLI's job stream is competitive for units in this speed range tested to date.
- The unit's print efficiency when producing multiple sets is competitive for the group.
- While the unit's copy productivity is above average in 2:2 mode and competitive for units tested in 1:2 mode, it is below average in 1:1 mode.
- First-copy times from both the platen and document feeder were below the average for units tested to date.

EASE OF USE

VERY GOOD

- + The MFX-2850 features a 3½" x 4¼" monochrome touch-screen control panel with a contrast dial and dedicated keys for Copy, Fax, Scanner and Printer. Each key illuminates when selected.
- + The system offers very good guidance messages on the display and is very easy to use.
- While the most commonly used features can easily found on the main screen—including duplexing, finishing, paper selection and zoom—they cannot be programmed from the main screen. Instead, the user selects a function, such as duplex, which brings up another screen from which the specific duplex mode can then be programmed.
- + Users can specify the default screen to display either copy, scan, fax, or printer features.
- + Up to five frequently used functions can be programmed on the default screen of the display via soft keys.
- + Programming a booklet copy job using multiple sets requires seven key-strokes.
- Programming a more complex copy job (2:2 duplex mode, reduction, single stapling mode and two sets) requires 20 keystrokes.
- + The List hard key allows users to print all settings programmed into the device for copy, scan, fax and the entire system, as well as a list of functions, departments and macro programs (programmed touch keys for frequently used functions).



Muratec MFX-2850 Control Panel

- + The unit comes equipped with an interactive voice guidance system that uses audible messages at the MFP to explain operations such as how to program speed-dial numbers and clear paper jams; alert users to problems with the machine, such as low toner or a paper jam; and provide device status, for example, that a document has been left on the glass after copying. In addition, the device beeps when a copy job has been completed, a fax has been sent or received or a reception has been printed. It also guides users through copy procedures such as zoom, duplex and staple. The “Voice guidance” button on the control panel flashes when guidance is available and during the audio message.
- + BLI technicians found the interactive voice guidance system to be useful for the removal of paper jams and changing the paper source. Additionally, the voice guidance would be very useful for new users in programming copy jobs.
- + Voice guidance and audible alerts can be customized by the administrator to different volumes or turned off. Additionally, the voice guidance and audible alerts can either be set to auto, which means the feature is activated whenever available, or manual, which allows the user to activate voice guidance via the Voice Guidance hard key on the control panel when the feature is needed.
- A Help key is not available.
- + The unit provides information regarding the removal of misfeeds via the interactive voice guidance system, which BLI technicians noted was easy to understand, making overall misfeed removal simple. In addition to verbal instructions, illustrations are provided on the touch screen. A blinking light on an illustration on the touch-screen indicates where the jam is located.
- The unit does not provide a job review key. However, the settings for the job currently running are highlighted on the touch-screen display.
- + The procedures for adjusting paper drawers are easy. The unit provides user-adjustable sliding length guides and auto paper sensors to automati-



cally detect the paper size. The bypass tray is semi-intelligent; as paper is recognized as soon as it is placed in the bypass tray. Once paper is placed in the bypass tray, a message pops up indicating paper size and type and asking the user to confirm.

- Each 550-sheet paper drawer (two standard, two optional) offers an easy-to-use handle for access.
- + The procedure for replacing the toner is simple and clean. Toner cannot be replaced while the unit is running.

FEATURE SET

GOOD

- The MFX-2850 offers a competitive standard paper capacity of 1,000 sheets (two 500-sheet drawers), plus a 150-sheet bypass, which is above average for similarly equipped models tested to date.
- Paper capacity can be expanded to a maximum of 3,650 sheets from five sources, which is also competitive.
- Though the unit's bypass tray can accommodate paper up to 53-¾ lbs, the standard drawers can accommodate only up to 24 lbs. Most competitive models accommodate heavier-weight stock from the drawers.
- The unit is equipped with 128 MB of copier RAM, shared among functions, which is below average for the group. A hard drive is not available.
- + The standard duplexing single-pass document feeder's (DSPF) 100-sheet capacity is above average for the group. This unit is also only one of three models tested in this speed range to offer a DSPF, which scans both sides of an original in a single pass, reducing the chance of a misfeed occurring.
- + In addition, the MFX-2850 offers card copy mode, which copies the front and back of an ID card or check-sized original onto one sheet of paper.
- Options include a 1,200-sheet stapling finisher that staples up to 50 sheets in three positions. An optional two-/three-hole punch unit is also available.
- Other options include a 2,500-sheet LCT, two 500-sheet drawers, a two-bin tray and a paper cabinet.
- + In addition to the standard Windows GDI controller, this unit offers an optional 600-MHz PCL print controller with a 512-MB print memory capacity.
- + Based on a 33.6-Kbps fax modem, fax functionality offers 500 autodial destinations and JBIG compression. Fax memory is shared with the copier.



- An electronic counter can be found by selecting “Counter” on the “Settings” screen on the touch-screen display (which is accessed via the Setting hard key on the control panel) to see the total number of print, scan and copy pages. The unit also features a standard mechanical page counter next to the toner tray.

SECURITY FEATURES

NOT RATED

- + In addition to network user authentication, which, when activated, requires users to enter their user name and password before accessing the unit, the MFX-2850 also features a copy protect feature, which blocks all users from accessing the copier.
- + Fax functionality can be secured by limiting reception and transmission destinations, and verifying broadcast destinations. Closed transmission/reception limits sent and received fax destinations by requiring users to enter a passcode at the MFP and only send or receive faxes from devices programmed with the same code. The Check broadcast destination feature allows users to confirm all destinations for broadcast transmission before starting transmission via a pop-up message asking users to select Enter or press Start to confirm fax locations, which prevents faxes from being sent to the wrong destination by allowing the user to verify that what they have typed is correct before sending the fax.
- This unit does not offer secure print.

TONER YIELD

GOOD

- + The tested toner yield of the MFX-2850 is slightly above the average for Segment 2 units tested to date.

VALUE

VERY GOOD

- + The MFX-2850 is priced below the average for comparably equipped models in this speed range. Indeed it is priced lower than most.
- Supplies cost per page could not be calculated, as pricing is set by dealers and was not provided by Muratec.



SUPPORTING TEST DATA

Test Environment

This product was tested in BLI's 10,000-square-foot test lab, in an environment monitored by a Honeywell Temp/RH chart recorder, which replicates typical office conditions.

Test Equipment

BLI's dedicated test network, consisting of Windows 2000 and Microsoft Exchange servers, Windows 2000 and XP workstations, 10BaseT/100BaseTX network switches and CAT5 cabling.

Test Duration

Products are tested for two months, five weeks of which consists of a durability test during which the product is run at its manufacturer-rated maximum monthly duty cycle, with 50 percent of the test volume comprised of copy jobs and 50 percent comprised of print jobs. BLI's daily test usage is designed to replicate real-world use over an eight-hour workday, and as such includes a mix of various-size documents, simplex and duplex modes, and a mix of short, moderate and long run lengths, and on/off cycles, throughout the day. The durability evaluation also includes testing of the document feeder/scanner for an additional 10 percent of the monthly maximum volume, evenly divided over the course of the test.

Tested Configuration

Base unit, plus two 500-sheet drawers, staple finisher and duplexing unit.

Test Procedures

The test methods and procedures employed by BLI in its lab testing include BLI's proprietary procedures and industry-standard test procedures, including a BLI-developed variation of ASTM's 1318-90 Test Method for Determination of Productivity using Electrostatic Copy Machines. In addition to a number of proprietary test documents, BLI uses an industry-standard Katun test original for evaluating black image quality and test suites from Quality Logic to evaluate applications compatibility. In addition to a visual observation, color print quality is tested using the ANSI standard IT8 Color Test Target, which is read using the Minolta CM503I Spectrophotometer, and samples are analyzed using the CIE XY Chromaticity Diagram. In addition, density of black and color output is measured using an X-Rite 428 Densitometer. Georgia-Pacific Spectrum Multi-Use 20-lb. bond is used in the tests, 10 percent of which is recycled paper containing 30 percent post-consumer content. Image quality is tested using Georgia-Pacific Printing Paper (95 brightness, 22-lb. bond).

Buyers Laboratory Inc. ■ 20 Railroad Avenue ■ Hackensack, NJ 07601 ■ USA ■ (201) 488-0404

Michael Danziger
CEO

Lynn Nannariello
Assistant Managing Editor

Carl Schell
Associate Editor

Pia Beddiges
Manager of Competitive Services

Mark Lerch
COO

Marlene Orr
Printer Industry Analyst

Lisa Reider
Research Editor

Ken Nardone
Technical Manager, Field Testing

Anthony F. Polifrone
Managing Director

Ben Curry
Associate Editor, Solutions

Marc Bussanich
Technical Analyst

Anthony Marchesini
IT Director

Daria M. Hoffman
Managing Editor

Tracie Hines
Associate Editor

Camille Dendtler
Research Manager

T. R. Patrick
Art Director

George Mikolay
Associate Editor

Pete Emory
Manager of Laboratory
Testing



RELIABILITY

Reliability

PMs/Malfunctions	Service Required	Meter Count (Impressions)	Impressions Between Service
Meter count (beginning of test)		0	
PM		80,000	
End of test period		50,000	
Total Misfeeds/Misfeed Rate	2 / 1 per 25,000 impressions		
Service Calls	0		
PMs	0		
Total Service Calls (including PMs)	0		

MULTITASKING

MULTITASKING EVALUATION

Primary Function	Secondary Function	PRINT	SCAN	COPY
PRINT		Yes	Yes	Yes
SCAN		Yes	No ¹	*
COPY		Yes	Yes	Yes

¹ Primary function was taking place and the device does not give a page to page status.

* As soon as the document feeder is free, the secondary function can be programmed, but the primary function was already complete.

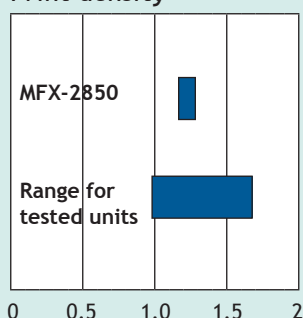
NOTE: A "Yes" indicates that the user can initiate the secondary function while the primary function is taking place and that no further user intervention will be required for the secondary function to take place.

In addition to a single-user multitasking test, which evaluates a unit's ability to initiate or perform one function while another function is already in progress (see chart above), BLI also tests a multifunctional product's ability to handle multiple jobs that would be likely to stack up in a multi-user networked environment.

IMAGE QUALITY

Print Quality	
Text	Very Good
Line Art	Very Good
Halftone Pattern	Good
Halftone Range	Very Good
Solids	Very Good

Print density



Print density:

1.17 to 1.29

Density for units in this class tested to date:

0.98 to 1.69

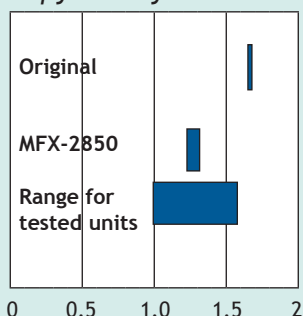
Halftone range:

Halftone output was visible from the 2% to 100% dot-fill levels, with distinct separation between levels and somewhat grainy coverage within levels.

Measurements are based on four readings corresponding to four different solid black locations on the output. The higher the density reading, the darker the image.

Copy Quality	
Text	Good
Line Art	Very Good
Halftone Pattern	Very Good
Halftone Range	Very Good
Solids	Very Good

Copy density



Density of original:

1.63 to 1.69

Density of copy:

1.22 to 1.32

Range for tested units:

0.99 to 1.58

Halftone range:

Halftone output was visible from the 15% dot-fill level (which is the minimum coverage level on the original) to the 100%



level, with distinct transitions between levels and somewhat grainy coverage within levels.

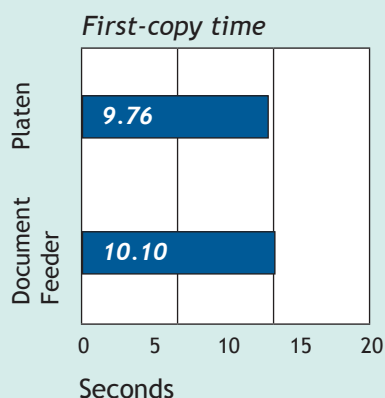
Measurements are based on eight readings corresponding to four different solid black locations on the output. The higher the density reading, the darker the image.

PRODUCTIVITY

Job Stream:

The unit completed the job stream in 53.56 seconds, running at 21.28 ppm, which translates to an efficiency rate of 76.02%.

BLI's job stream includes Word documents, Outlook e-mail messages, Excel spreadsheets, PowerPoint, HTML and Acrobat PDF files, totaling 19 pages. This test simulates the type of traffic a typical device might experience in a real-world, multi-user environment. All of the files are sent to the printer as a group, at which time the stopwatch begins; timing ends when the last page of the last file exits the device. Job stream efficiency is determined by the percentage of the rated speed at which the unit operates when producing real-world jobs. The closer the rate is to 100%, or if it exceeds 100%, the more efficient the unit.



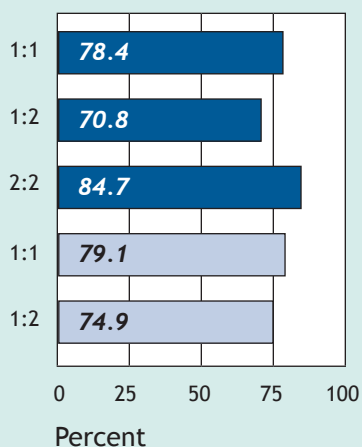
First-copy time:

9.76 seconds from the platen.

10.10 seconds from the document feeder.



Overall Efficiency



BLI obtains the overall efficiency for each copy/print mode by averaging the efficiency ratings (derived by dividing the tested speed of the device by the rated speed, and then multiplying by 100) for each run length (1 and 5 sets).

■ Color
■ Monochrome

Copy/Print Efficiency For Multiple Sets

Copy 1:1					
Sets	Min.	Sec.	PPM	Efficiency	Overall Efficiency
1	0	31.85	18.8	67.3%	67.3%
5	1	59.69	25.1	89.5%	78.4%
Copy 1:2					
Sets	Min.	Sec.	PPM	Efficiency	Overall Efficiency
1	0	42.91	14.0	49.9%	49.9%
5	1	56.91	25.7	91.6%	70.8%
Copy 2:2					
Sets	Min.	Sec.	PPM	Efficiency	Overall Efficiency
1	1	3.32	19.0	67.7%	67.7%
5	3	30.47	28.5	101.8%	84.7%
Print 1:1					
Sets	Min.	Sec.	PPM	Efficiency	Overall Efficiency
1	0	31.88	18.8	67.2%	67.2%
5	1	57.66	25.5	91.1%	79.1%
Print 1:2					
Sets	Min.	Sec.	PPM	Efficiency	Overall Efficiency
1	0	38.94	15.4	55.0%	55.0%
5	1	52.94	26.6	94.9%	74.9%

Efficiency is tested using BLI's 10-page document with the unit in black mode.



SCAN FUNCTIONS

Scan speed (300-dpi, TIFF):

1:1 mode: 40.37 originals per minute

2:2 mode: 18.45 originals or 36.9 images per minute.

Scan File Size

	Mode	No compression
Single page file	B&W	49 MB
Multi page file	B&W	1 MB
Multi page file	Color	4 MB
Single page file	Color *	672 MB

None of the color files reduced in size when compression modes were selected.

All files are transmitted using 300-dpi and PDF mode.

** For the test in color mode, 10-page file consists of six black pages and four pages containing a mix of black and color.*

PRINT DRIVERS

Muratec MFX-2850 Print Driver Features

Windows 2000	PCL 6
Auto Feature/Device Detection	No
Booklet Printing	No
Collate Sets	No
Max paper sources per job	1
N-up Printing	2 to 8
Overlay	No
Paper Gauge	No
Print and Hold	No
Proof Print	No
Quantity Selection	Up to 999
Reduction/Enlargement	25% to 400%
Resolution Modes	600 x 600 dpi; 300 x 300 dpi
Save Settings	No
Secure Printing	No
Watermarks/Custom Watermarks	Yes/Yes



TONER YIELD

Tested Toner Yield/Cost Per Page

Toner Cartridge Net Weight	Toner Yield (Impressions)	Impressions Per Gram	Toner Cost Per Page	Supplies Cost Per Page
353.7	20,821	58.86	***	***

*** Supplies priced by dealer.

LAB TEST

Muratec MFX-2850D

Manufacturing Status: New
Console, digital Monochrome copier, MF
Dry, dual component toner



FAD 14507

BACKGROUND INFO	Dataquest Segment 2
SRP (USA; Canada):	\$8,765; INA
Domestic Intro Date:	October 2006
OEM:	Muratec (Japan)
Also Sold As:	Similar to: Konica Minolta bizhub 350
Distribution:	Dealers
Max Mo Duty Cycle:	50,000 impressions

■ MULTIFUNCTION MODES

Copier:	Std	Fax:	Std
Internet Fax:	Std	Network Fax:	Std
Network Printer:	Std	PC Fax:	Std
Printer:	Std	Scanner:	Std

■ GENERAL SPECS/PAPER HANDLING

First Copy Time:	5 sec
Multicopy (Ltr/Lgl/Ldgr):	28 cpm/INA/INA
Warm-up Time:	17 sec
Std Paper Source(s):	Dual drawer
Std Paper Capacity:	500/500 sheets
Paper Weights:	16 to 24 lbs
Bypass/Paper Weights:	150-sheet/15 to 53-3/4 lbs
Max Paper Sources/Cap:	5/3,650 sheets
Max Original Size:	11 x 17
Min/Max Output Size:	5-1/2 x 8-1/2/11 x 17
Scan/Copy Resolution:	600 x 600 dpi
Std/Max Copier Memory:	Info not avail/Info not avail
Duplex:	Auto (1:2, 2:2, 2:1)
Capacity/Paper Sizes:	Unlimited/5-1/2 x 8-1/2 to 11 x 17
Document Feeder:	Std DSPF
Speed/Capacity:	Info not avail/100 orig
Paper Weights:	11 to 24 lbs
Stapler Sorter:	None
Bins/Stapling Cap:	Not applicable
Stapling Positions:	Not applicable
Finisher:	Opt finisher
Tray/Stapling/Pos(s):	1,200/50/3

Other: Opt 2-/3-hole punch; envelope feeding through bypass

■ COPIER FEATURES

Automatic Features: AES, AMS, APS, ASO, ATS			
Book Copy:	Yes	Job Programs:	10
Booklet Mode:	Std	Job Time:	No
Color:	No	Language:	Std
Copy Control:	INA	Margin Shift:	Yes
Covers:	No	Neg/Pos:	Yes
Editing:	No	OHP Interleaving:	No
Energy-Save:	Yes	Photo Mode:	Yes
Erase:	Std	Preset R/E:	INA
Image Insert:	No	Program Ahead:	Std
Image Overlay:	No	Sheet Insertion:	No
Image Repeat:	Yes	Stamping:	No
Image Rotate:	Std	Timer:	No
Interrupt:	Yes	2-in-1:	Std
Job Build:	Yes	XY Zoom:	Yes
Zoom Range: 25 to 400 (0.1%)			

■ **OTHER FEATURES:** Card copy mode; single pass duplex scanning scans both sides of original in a single pass reducing the chance of misfeeds; Customizable "soft keys."

MULTIFUNCTIONALITY

CONNECTIVITY SPECS

Client OS Support:	Win 98, 2000, Me, XP		
Parallel Interface:	None		
PC Fax/Print/Scan:	Not applicable		
Serial Interface:	None		
PC Fax/Print/Scan:	Not applicable		
USB Interface:	Std		
PC Fax/Print/Scan:	No/Yes/No		
Network Interface:	Std Ethernet		
Interface Type:	10BaseT, 100BaseTX		
LAN Fax/Print/Scan:	Yes/Yes/Yes		
Networks Supported:			
NetWare:	No	Windows NT:	Yes
AppleTalk:	No	UNIX:	No
AS/400:	No	Other:	

PRINTER SPECS

Engine Mfr/Model:	Konica Minolta/bizhub 350
Compatibility:	IBM PC
Speed:	28 ppm
Max Print Area:	11 x 17
Enhanced Resolution:	600 x 600 dpi
Unenhanced Resolution:	600 x 600 dpi
Std/Max Printer Memory:	Info not avail
Controller Mfr/Model:	Muratec/Controller
Processor/Bits/MHz:	Windows GDI/PCL550/160
PDL/PCL:	PCL 5c/6
Controller Mfr/Model:	Not applicable
Processor/Bits/MHz:	Not applicable
PDL/PCL:	Not applicable
Controller Mfr/Model:	Not applicable
Processor/Bits/MHz:	Not applicable
PDL/PCL:	Not applicable

SCANNER & IMAGE MANAGEMENT SPECS

Connection Type:	Network		
Technology/Speed:	CCD/Info not avail		
Max Resolution:	600 x 600 dpi		
TWAIN Compatible:	Yes		
Scan Destinations:			
E-Mail:	Yes	I-fax:	Yes
FTP:	No	SMB:	No
HDD:	No	URL:	
LDAP:	No		
Scan/Image Software:	None None		
OCR Software:	None		
File Mgmt Software:	None		
Other: Color scanning			

FACSIMILE SPECS

Scanner Technology:	CCD
Compression Method:	MH/MR/MMR/JBIG
Modem Speed:	33.6 Kbps
Std/Max Fax Memory:	Shared
Min/Max Orig Size:	5-1/2 x 8-1/2/11 x 17
Max Paper/Print Width:	INA
Effective Scan Width:	11
Battery Backup:	Yes, 34 hours
Relay Request:	Yes
Confid TX/RX:	Yes/Yes
Dual Lines:	Opt
Timers:	Yes
Multi Access:	Yes
Dialing Capabilities	
Broadcasting (Grps/Dest):	32/530
Redial Attempts/Intervals:	2 to 15/1 to 5 min
One Touch/Speed Dial:	500 / Info not avail

Other: Shared copier and fax memory

COMMENTS: Optional print controller comes with 512 MB of RAM and supports UNIX, AS/400 and Linux environments.

ADDITIONAL INFORMATION

Control Panel:	Keypad and touch screen
Quantity Selector:	1 to 999 (0 to 9 keypad)
Message Display:	Yes
Help Key:	Info not avail
Dimensions (H x W x D):	Info not avail
Weight (Base Unit):	Info not avail
Power Reqs (V / Amps):	Info not avail
Dedicated Outlet:	Not required
Energy Star-Compliant:	Yes
Operating Noise Level:	Info not avail

SUPPLIES / MAINTENANCE

Photoconductor:	Organic drum ctrdrg
Yield:	80,000
Price:	Priced by dealer
Toner:	Btl weight not avail
Yield:	17,500
Price:	Priced by dealer
% Coverage:	6%
Developer:	Included in drum ctrdrg
Yield:	Not applicable
Price:	Not applicable
PM Schedule:	Info not avail

OPTIONS

500-sheet (2 each) cassette:	\$975
2,500-sheet LCT:	\$1,200
Paper cabinet:	\$245
2-bin tray:	\$337
Staple finisher:	\$1,500
Punch kit:	\$500
2d 33.6 Kbps modem:	\$650
Print controller:	\$550

CERTIFICATE OF RELIABILITY

AWARDED TO
MURATEC

For the performance of the
Muratec MFX-2850
throughout BLI's in-house durability test.

This is to certify that when subjected to a 50,000-impression
Buyers Lab durability test in a networked environment,
the Muratec MFX-2850 proved to be a highly reliable product.


ANTHONY F. POLIFRONE
MANAGING DIRECTOR



March 2007
DATE

THE LEADING INDEPENDENT OFFICE PRODUCTS TEST LAB AND BUSINESS CONSUMER ADVOCATE
BUYERS LABORATORY INC. • 20 RAILROAD AVENUE • HACKENSACK, NJ 07601 • USA • WWW.BUYERSLAB.COM
Copyright 2007 Buyers Laboratory. This certificate has been reproduced with the written permission of BLI.